

State Treasury Debt

Monthly newsletter

Warsaw, 22 July 2013

May 2013

At the end of May 2013 State Treasury (ST) debt amounted to PLN **838,052.7** million (about EUR 195.3bn / USD 254.3bn, with exchange rate of May 31, 2013: 1 EUR = 4.2902 PLN, 1 USD = 3.2953 PLN).

In comparison with April 2013 ST debt increased by PLN 16,569.9 million (2.0%). From December 2012 to May 2013 ST debt increased by PLN 44,199.0 million (5.6%).

Table 1 presents factors affecting change in ST debt. An increase in debt in May 2013 was mainly connected with the weakening of Polish zloty and the increase in state budget account balance. Increase of debt since the end of 2012 was primarily the result of financing the state budget deficit (PLN 30.9 bn after 5 months of 2013) and the weakening of Polish zloty.

Tables 2 and 3 present – respectively – the breakdown of ST debt by instrument and by holder.

Table 1. Factors affecting change in the State Treasury debt (PLN billion)

	May 2013 - Apr 2013	May 2013 - Dec 2012
Change in the State Treasury debt	16.6	44.2
1. State budget borrowing requirements (1.1 – 1.2 + 1.3 + 1.4 + 1.5 + 1.6)	0.1	41.3
1.1. State budget deficit	-0.8	30.9
1.2. European Union funds budget balance	1.8	-1.2
1.3. Pension reform costs ¹⁾	0.8	4.1
1.4. Proceeds from privatisation	0.0	-0.7
1.5. Management of public finance sector liquidity	0.2	-1.4
1.6. Other borrowing requirements ²⁾	1.7	7.2
2. Changes not resulting from State budget borrowing requirements, including:	16.4	1.3
2.1. FX rates movements	8.4	10.4
2.2. Changes in budget account balance	8.0	-8.4
2.3. Other factors ³⁾	0.0	-0.7
3. Change in other State Treasury debt	0.1	1.6

¹⁾ Funds transferred to Social Security Fund (FUS) as compensation for contributions transferred to open pension funds (OFE).

²⁾ Mainly: changes of balance of granted loans and prefinancing.

³⁾ TS discount, TS capitalisation and indexation.

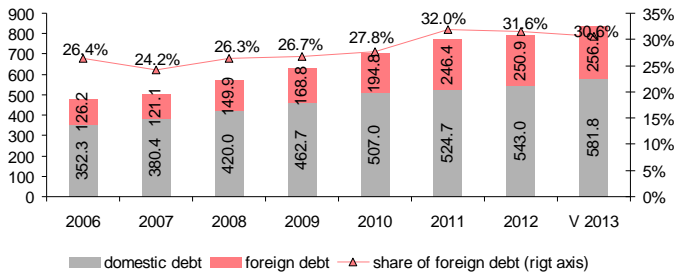
Table 2. State Treasury debt by instrument (PLN million)

	Dec 2012	structure Dec 2012 %	Apr 2013	structure Apr 2013 %	May 2013	structure May 2013 %	change May 2013 - Apr 2013		change May 2013 - Dec 2012	
							PLN m	%	PLN m	%
							State Treasury debt	793,853.7	100.0	821,482.9
I. Domestic ST debt	542,969.9	68.4	573,405.5	69.8	581,838.9	69.4	8,433.3	1.5	38,868.9	7.2
1. Treasury Securities (TS) issued in domestic market	533,477.5	67.2	562,400.8	68.5	570,783.3	68.1	8,382.5	1.5	37,305.8	7.0
1.1. Marketable TS	526,109.5	66.3	555,035.9	67.6	563,458.2	67.2	8,422.2	1.5	37,348.6	7.1
- Treasury bills	6,110.4	0.8	8,432.9	1.0	4,830.3	0.6	-3,602.5	-42.7	-1,280.0	-20.9
- bonds	519,999.2	65.5	546,603.0	66.5	558,627.8	66.7	12,024.8	2.2	38,628.6	7.4
1.2. Savings bonds	7,367.9	0.9	7,364.9	0.9	7,325.2	0.9	-39.7	-0.5	-42.8	-0.6
2. Other ST debt	9,492.4	1.2	11,004.7	1.3	11,055.5	1.3	50.8	0.5	1,563.1	16.5
II. Foreign ST debt	250,883.8	31.6	248,077.3	30.2	256,213.9	30.6	8,136.5	3.3	5,330.1	2.1
1. TS issued in foreign markets	199,955.1	25.2	195,080.8	23.7	201,597.2	24.1	6,516.3	3.3	1,642.1	0.8
2. Loans	50,928.6	6.4	52,996.5	6.5	54,616.7	6.5	1,620.2	3.1	3,688.1	7.2
3. Other ST debt	0.1	0.0	0.0	0.0	0.0	0.0	0.0	0.0	-0.1	-96.5

Table 3. State Treasury debt by holder (PLN million)

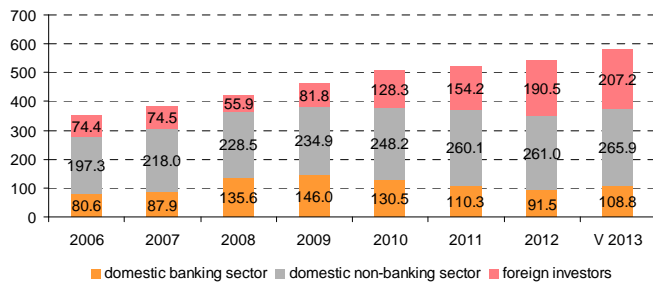
	Dec 2012	structure Dec 2012 %	Apr 2013	structure Apr 2013 %	May 2013	structure May 2013 %	change May 2013 - Apr 2013		change May 2013 - Dec 2012	
							PLN m	%	PLN m	%
							State Treasury debt	793,853.7	100.0	821,482.9
I. State Treasury debt towards residents	361,478.4	45.5	377,049.4	45.9	384,680.5	45.9	7,631.1	2.0	23,202.0	6.4
Domestic banking sector	98,564.1	12.4	112,715.6	13.7	116,931.6	14.0	4,215.9	3.7	18,367.5	18.6
- domestic instruments	91,526.3	11.5	103,762.4	12.6	108,770.9	13.0	5,008.6	4.8	17,244.6	18.8
- foreign instruments	7,037.8	0.9	8,953.3	1.1	8,160.6	1.0	-792.6	-8.9	1,122.9	16.0
Domestic non-banking sector	262,914.4	33.1	264,333.7	32.2	267,748.9	31.9	3,415.2	1.3	4,834.5	1.8
- domestic instruments	260,964.9	32.9	262,327.9	31.9	265,860.7	31.7	3,532.8	1.3	4,895.8	1.9
- foreign instruments	1,949.5	0.2	2,005.8	0.2	1,888.2	0.2	-117.6	-5.9	-61.3	-3.1
II. State Treasury debt towards non-residents	432,375.3	54.5	444,433.5	54.1	453,372.3	54.1	8,938.8	2.0	20,997.0	4.9
- domestic instruments	190,478.7	24.0	207,315.3	25.2	207,207.2	24.7	-108.1	-0.1	16,728.5	8.8
- foreign instruments	241,896.5	30.5	237,118.2	28.9	246,165.1	29.4	9,046.8	3.8	4,268.5	1.8

ST debt according to the place of issue criterion (PLN bn)



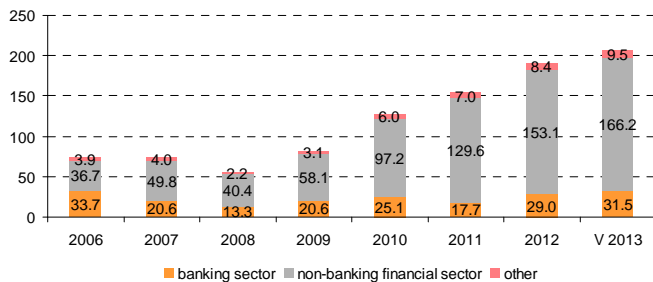
The share of foreign debt in total State Treasury debt decreased from 31.6% at the end of 2012 to 30.6% at the end of May 2013. This was a result of financing borrowing requirements mainly on domestic market; the majority of foreign currency borrowing requirements were financed in advance in 2012.

Domestic ST debt by holder (PLN bn)



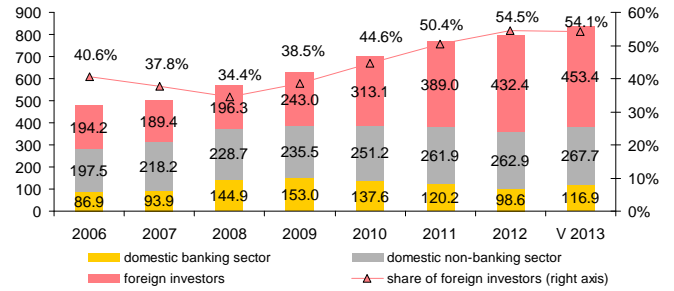
The domestic non-banking sector is the most significant group of creditors (45.7% of domestic debt; primarily non-banking financial institutions).

Domestic ST debt towards non-residents (PLN bn)



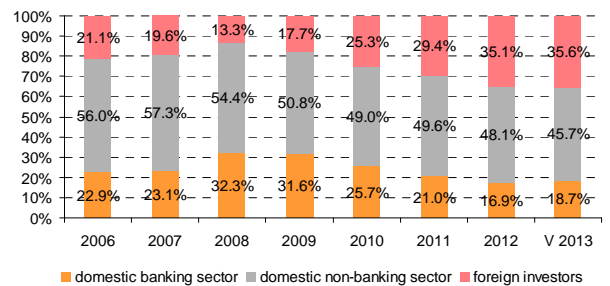
The increase of ST debt towards non-residents since the end of 2008 (by PLN 151.3 bn) is mainly connected with the increase of debt towards non-banking financial sector.

ST debt by holder (PLN bn)



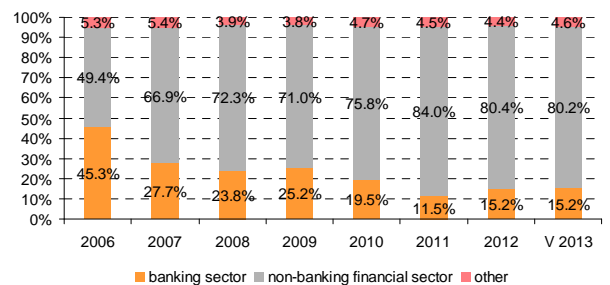
In May 2013 the share of foreign investors (non-residents) in the State Treasury debt decreased slightly compared with the end of 2012 (from 54.5% to 54.1%). The highest increase was among domestic banking sector (PLN 18.4 bn).

Structure of domestic ST debt



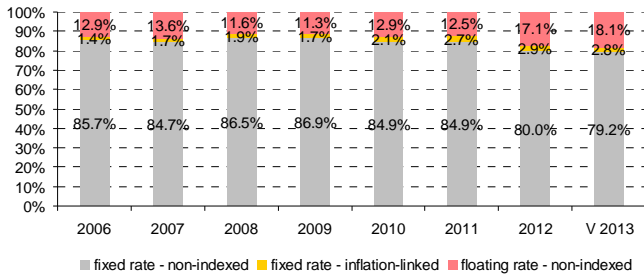
The share of foreign investors in the domestic debt increased from 35.1% at the end of 2012 to 35.6% at the end of May 2013. This was a result of inflow of non-residents to domestic State Treasury securities market.

Structure of domestic ST debt towards non-residents



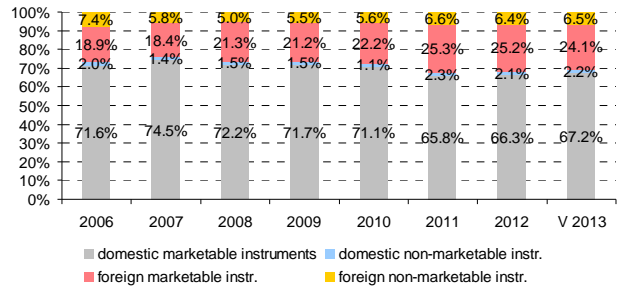
The share of non-banking financial sector in the structure of domestic ST debt towards non-residents remains continuously at high level (around 80%).

ST debt by type of interest rate and type of indexation



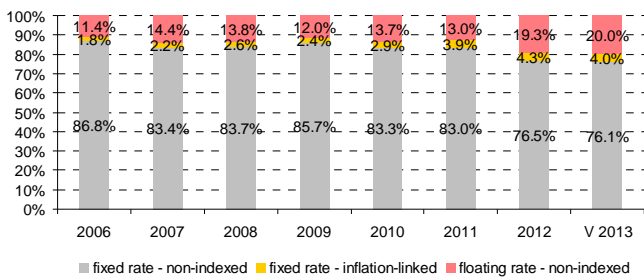
The vast majority of State Treasury debt is fixed-rate (81.9%), mostly non-indexed (fixed-income) instruments (79.2%).

ST debt by type of instrument



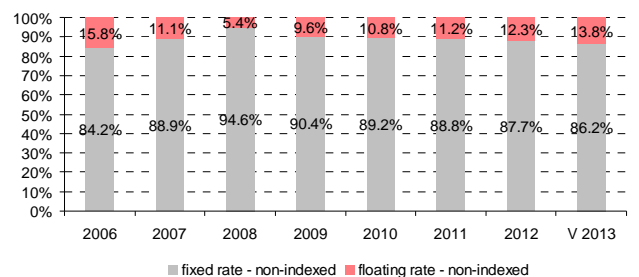
Structure of ST debt by type of instrument remains stable. Non-marketable instruments, that collectively account for 8.7% of the State Treasury debt, include mainly foreign loans, deposits and savings bonds.

Domestic ST debt by type of interest rate and type of indexation



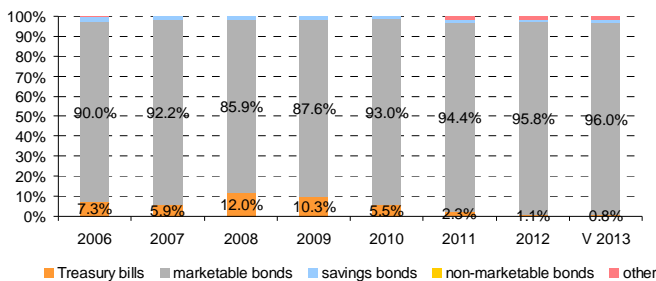
The vast majority of domestic ST debt is also fixed-rate. The share of floating rate instruments at the end of May 2013 was at 20.0%.

Foreign ST debt by type of interest rate and type of indexation



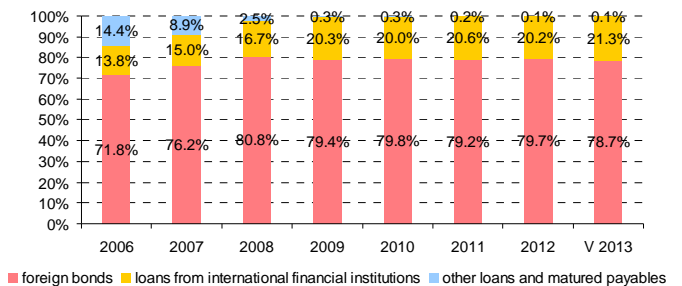
The share of floating rate instruments in foreign debt increased from 12.3% at the end of 2012 to 13.8% at the end of May 2013. The loans from international financial institutions are the vast majority of floating rate foreign debt.

Domestic ST debt (according to the place of issue criterion)



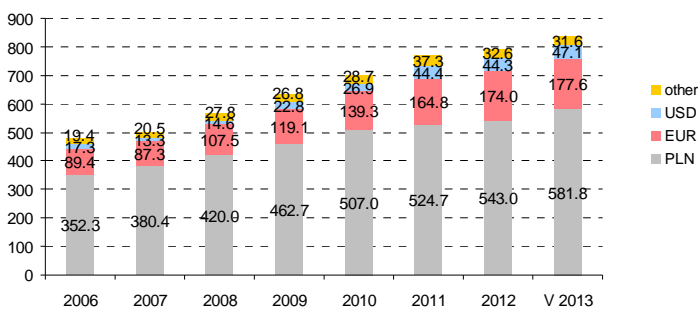
Marketable bonds are the vast majority (96.0%) of domestic debt. The share of Treasury bills remains low – 0.8% in May 2013.

Foreign ST debt (according to the place of issue criterion)



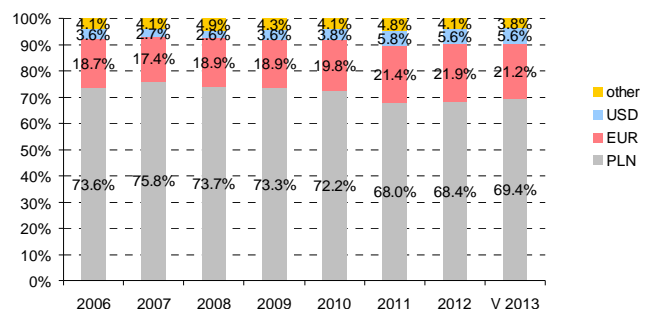
International bonds (78.7%) and loans from international financial institutions (21.3%) collectively account for almost all of the foreign debt.

ST debt by currency



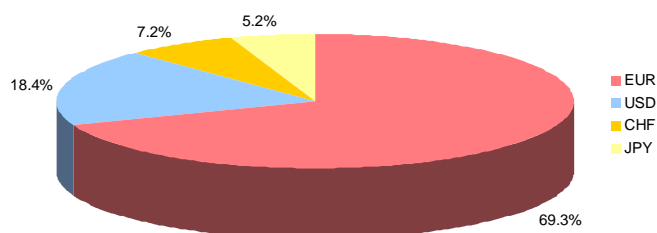
At the end of May 2013 ST debt denominated in foreign currencies amounted to PLN 256.2 bn and was higher by PLN 5.3 bn comparing with the end of 2012 as a result of the weakening of Polish zloty.

Structure of ST debt by currency



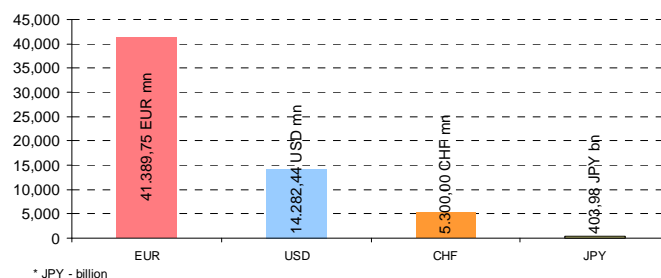
Almost 70% of ST debt is denominated in PLN and about 21% in EUR.

Foreign ST debt by currency



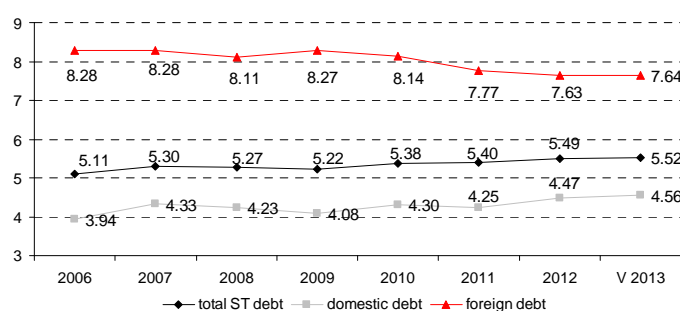
Almost 70% of foreign debt is denominated in EUR.

Foreign ST debt - nominal value

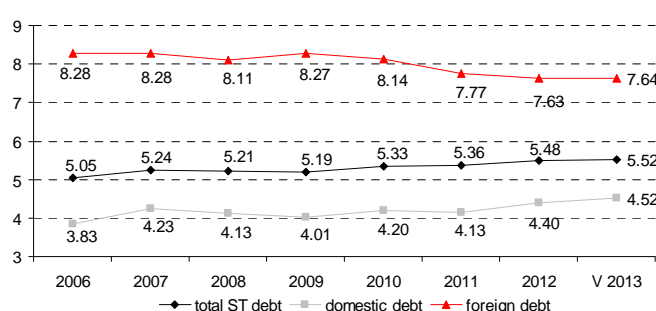


Nominal value of ST debt denominated in EUR amounted to almost EUR 41.4 bn at the end of May 2013.

ATM of ST debt (years)

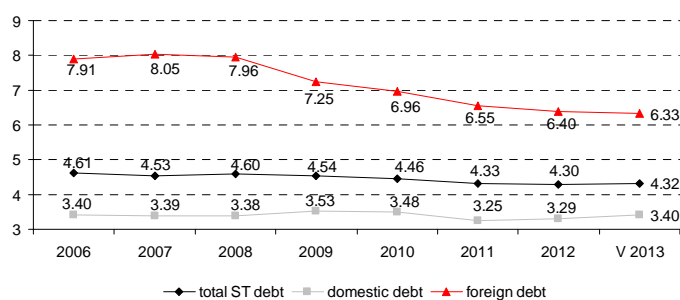


ATM of ST debt without inflation-linked bonds (years)

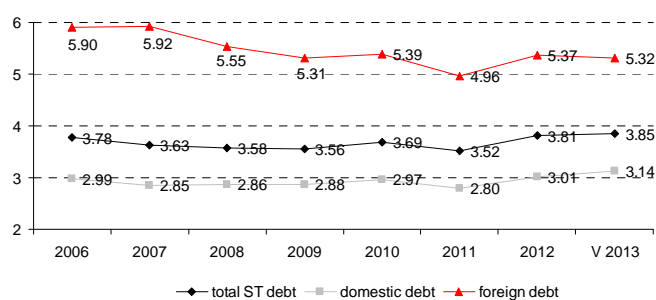


In 2013 **refinancing risk** of State Treasury debt was reduced – average term to maturity (ATM) of State Treasury debt increased from 5.49 to 5.52 years (ATM of domestic debt increased from 4.47 years to 4.56 years and ATM of foreign debt increased from 7.63 to 7.64 years).

ATR of ST debt (years)

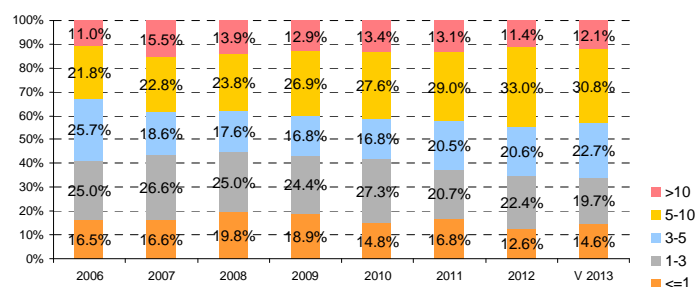


Duration of ST debt without inflation-linked bonds (years)



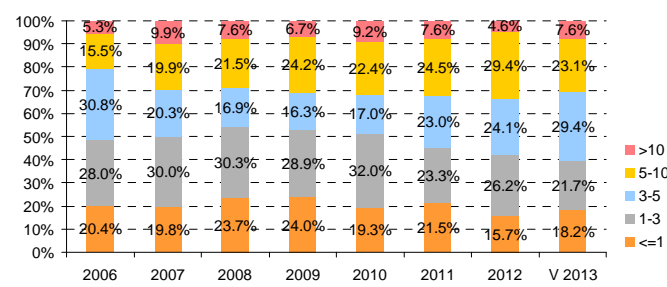
Interest rate risk measures of State Treasury debt improved since the beginning of 2013 – Average time to refixing (ATR) of ST debt increased from 4.30 to 4.32 years and duration increased from 3.81 to 3.85 years.

Residual maturity of ST debt (years)



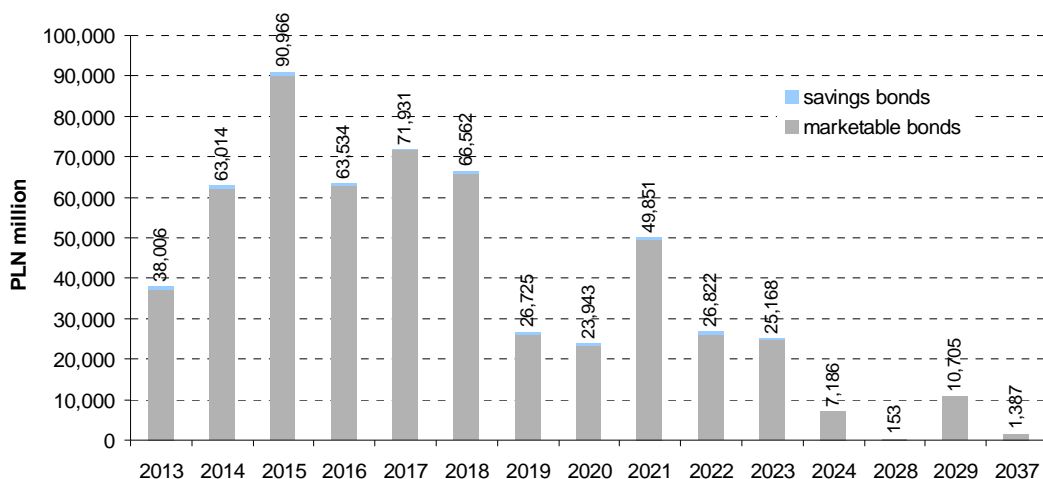
Debt with residual maturity of up to 3 years accounted for 34.3% of State Treasury debt (35.0% at the end of 2012) while debt with residual maturity of up to 1 year accounted for 14.6% of State Treasury debt.

Residual maturity of domestic debt (years)



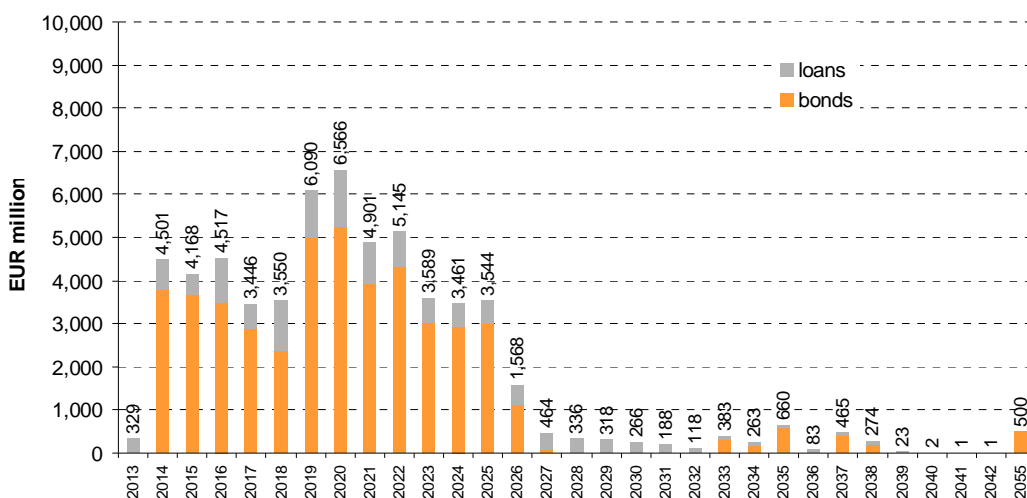
Debt with residual maturity of up to 3 years accounted for 39.9% of domestic debt (41.9% at the end of 2012) while debt with residual maturity of up to 1 year accounted for 18.2% of domestic debt.

Maturity profile of domestic treasury securities debt as at the end of May 2013



* A part of short-term domestic debt was not included in the chart: (a) maturing in 2013 – treasury bills (PLN 4,830 mn) and other ST debt (PLN 11,053 mn – mainly deposits of public finance sector entities) and (b) maturing in 2014 – deposits of public finance sector entities (PLN 3 mn).

Maturity profile of foreign debt (treasury securities and loans) as at the end of May 2013



* A part of short-term foreign debt maturing in 2013 was not included in the chart – matured payables (PLN 2.8 thousand)

Maturity profile of ST debt (treasury securities and loans) as at the end of May 2013

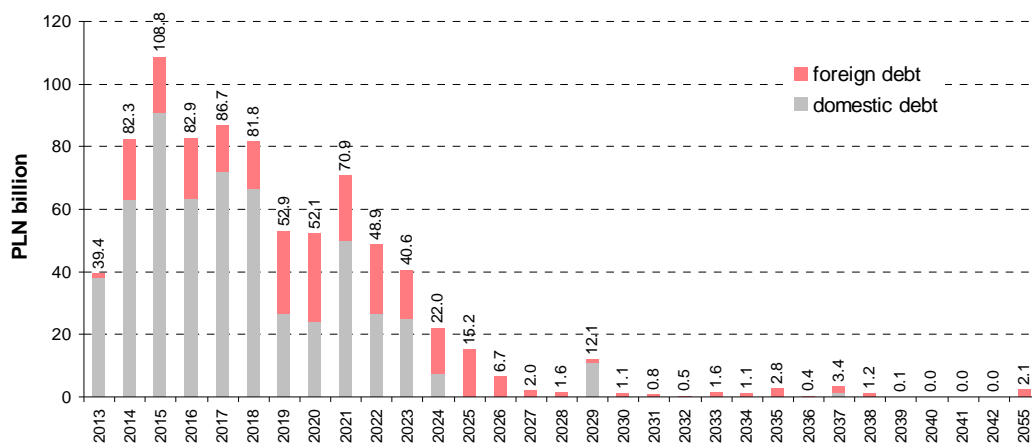


Table 4. State Treasury debt by instrument according to the place of issue criterion (PLN million)

	Dec 2012	structure Dec 2012 %	Apr 2013	structure Apr 2013 %	May 2013	structure May 2013 %	change		change	
							May 2013 - Apr 2013		May 2013 - Dec 2012	
							PLN m	%	PLN m	%
State Treasury Debt	793,853.7	100.0	821,482.9	100.0	838,052.7	100.0	16,569.9	2.0	44,199.0	5.6
I. Domestic debt	542,969.9	68.4	573,405.5	69.8	581,838.9	69.4	8,433.3	1.5	38,868.9	7.2
1. Treasury Securities issued in domestic market	533,477.5	67.2	562,400.8	68.5	570,783.3	68.1	8,382.5	1.5	37,305.8	7.0
1.1. Marketable securities	526,109.5	66.3	555,035.9	67.6	563,458.2	67.2	8,422.2	1.5	37,348.6	7.1
fixed rate	404,025.7	50.9	423,804.1	51.6	429,955.1	51.3	6,150.9	1.5	25,929.4	6.4
Treasury bills	6,110.4	0.8	8,432.9	1.0	4,830.3	0.6	-3,602.5	-42.7	-1,280.0	-20.9
OK bonds	55,489.4	7.0	56,558.1	6.9	56,558.1	6.7	0.0	0.0	1,068.7	1.9
PS bonds	151,290.3	19.1	158,688.2	19.3	165,186.2	19.7	6,498.0	4.1	13,895.9	9.2
DS bonds	154,636.1	19.5	161,997.9	19.7	165,100.4	19.7	3,102.5	1.9	10,464.2	6.8
WS bonds	36,499.5	4.6	38,127.1	4.6	38,280.0	4.6	152.9	0.4	1,780.5	4.9
fixed rate - inflation-linked	23,100.0	2.9	23,172.4	2.8	23,217.3	2.8	44.9	0.2	117.3	0.5
IZ bonds	23,100.0	2.9	23,172.4	2.8	23,217.3	2.8	44.9	0.2	117.3	0.5
floating rate	98,983.8	12.5	108,059.4	13.2	110,285.8	13.2	2,226.4	2.1	11,302.0	11.4
TZ bonds	494.6	0.1	467.9	0.1	444.4	0.1	-23.6	-5.0	-50.3	-10.2
WZ bonds	97,739.2	12.3	106,841.4	13.0	109,091.4	13.0	2,250.0	2.1	11,352.2	11.6
PP bonds	750.0	0.1	750.0	0.1	750.0	0.1	0.0	0.0	0.0	0.0
1.2. Savings bonds	7,367.9	0.9	7,364.9	0.9	7,325.2	0.9	-39.7	-0.5	-42.8	-0.6
fixed rate	1,784.0	0.2	1,573.2	0.2	1,531.8	0.2	-41.5	-2.6	-252.2	-14.1
DOS bonds	1,784.0	0.2	1,573.2	0.2	1,531.8	0.2	-41.5	-2.6	-252.2	-14.1
floating rate	5,584.0	0.7	5,791.7	0.7	5,793.4	0.7	1.8	0.0	209.4	3.8
TOZ bonds	80.5	0.0	105.5	0.0	119.3	0.0	13.8	13.1	38.7	48.1
COI bonds	1,831.9	0.2	1,892.8	0.2	1,876.0	0.2	-16.7	-0.9	44.1	2.4
EDO bonds	3,671.5	0.5	3,793.4	0.5	3,798.1	0.5	4.7	0.1	126.6	3.4
2. Other domestic debt	9,492.4	1.2	11,004.7	1.3	11,055.5	1.3	50.8	0.5	1,563.1	16.5
deposits of public finance sector entities	9,438.1	1.2	10,954.7	1.3	11,005.5	1.3	50.8	0.5	1,567.4	16.6
matured payables	50.8	0.0	45.0	0.0	45.0	0.0	0.0	0.0	-5.8	-11.4
other	3.6	0.0	5.0	0.0	5.0	0.0	0.0	0.0	1.5	41.0
II. Foreign debt	250,883.8	31.6	248,077.3	30.2	256,213.9	30.6	8,136.5	3.3	5,330.1	2.1
1. Treasury securities issued in international markets	199,955.1	25.2	195,080.8	23.7	201,597.2	24.1	6,516.3	3.3	1,642.1	0.8
1.1. Marketable securities	199,955.1	25.2	195,080.8	23.7	201,597.2	24.1	6,516.3	3.3	1,642.1	0.8
fixed rate	198,431.5	25.0	193,553.0	23.6	200,031.2	23.9	6,478.2	3.3	1,599.8	0.8
EUR	123,367.6	15.5	118,888.8	14.5	123,115.9	14.7	4,227.1	3.6	-251.7	-0.2
USD	44,014.3	5.5	45,043.8	5.5	46,793.3	5.6	1,749.4	3.9	2,778.9	6.3
CHF	16,680.0	2.1	16,656.8	2.0	17,025.2	2.0	368.4	2.2	345.2	2.1
JPY	14,369.6	1.8	12,963.6	1.6	13,096.9	1.6	133.3	1.0	-1,272.7	-8.9
floating rate	1,523.6	0.2	1,527.8	0.2	1,565.9	0.2	38.1	2.5	42.3	2.8
USD	253.6	0.0	259.5	0.0	269.6	0.0	10.1	3.9	16.0	6.3
CHF	1,270.1	0.2	1,268.3	0.2	1,296.3	0.2	28.1	2.2	26.3	2.1
2. Loans	50,928.6	6.4	52,996.5	6.5	54,616.7	6.5	1,620.2	3.1	3,688.1	7.2
fixed rate	21,496.0	2.7	20,278.8	2.5	20,861.2	2.5	582.4	2.9	-634.8	-3.0
EUR	21,251.6	2.7	20,118.2	2.4	20,698.9	2.5	580.7	2.9	-552.7	-2.6
USD	3.9	0.0	2.0	0.0	2.1	0.0	0.1	3.9	-1.8	-46.8
JPY	240.5	0.0	158.6	0.0	160.2	0.0	1.6	1.0	-80.3	-33.4
floating rate	29,432.6	3.7	32,717.7	4.0	33,755.5	4.0	1,037.8	3.2	4,322.9	14.7
EUR	29,428.2	3.7	32,713.2	4.0	33,755.5	4.0	1,042.3	3.2	4,327.3	14.7
USD	4.4	0.0	4.5	0.0	-	0.0	-4.5	-100.0	-4.4	-100.0
3. Other foreign debt	0.1	0.0	0.0	0.0	0.0	0.0	0.0	0.0	-0.1	-96.5

Table 5. State Treasury debt by holder (PLN million)

	Dec 2012	structure Dec 2012 %	Apr 2013	structure Apr 2013 %	May 2013	structure May 2013 %	change May 2013 - Apr 2013		change May 2013 - Dec 2012	
							PLN m	%	PLN m	%
State Treasury debt	793,853.7	100.0	821,482.9	100.0	838,052.7	100.0	16,569.9	2.0	44,199.0	5.6
I. State Treasury debt towards residents	361,478.4	45.5	377,049.4	45.9	384,680.5	45.9	7,631.1	2.0	23,202.0	6.4
Domestic banking sector	98,564.1	12.4	112,715.6	13.7	116,931.6	14.0	4,215.9	3.7	18,367.5	18.6
1. TS issued in domestic market	91,526.3	11.5	103,762.4	12.6	108,770.9	13.0	5,008.6	4.8	17,244.6	18.8
1.1. Marketable TS	91,526.3	11.5	103,762.4	12.6	108,770.9	13.0	5,008.6	4.8	17,244.6	18.8
Treasury bills	3,769.8	0.5	4,305.9	0.5	2,958.0	0.4	-1,347.9	-31.3	-811.8	-21.5
OK bonds	7,115.5	0.9	10,384.3	1.3	11,458.8	1.4	1,074.5	10.3	4,343.3	61.0
PS bonds	24,411.6	3.1	31,563.5	3.8	34,943.9	4.2	3,380.5	10.7	10,532.3	43.1
DS bonds	19,844.9	2.5	16,939.8	2.1	18,899.5	2.3	1,959.8	11.6	-945.3	-4.8
WS bonds	1,389.7	0.2	1,944.6	0.2	1,609.2	0.2	-335.4	-17.2	219.5	15.8
IZ bonds	581.2	0.1	606.7	0.1	648.4	0.1	41.8	6.9	67.3	11.6
TZ bonds	0.5	0.0	0.5	0.0	0.5	0.0	0.0	0.0	0.0	0.0
WZ bonds	34,398.3	4.3	38,002.2	4.6	38,237.6	4.6	235.4	0.6	3,839.3	11.2
PP bonds	15.0	0.0	15.0	0.0	15.0	0.0	0.0	0.0	0.0	0.0
1.2. Savings bonds	0.0	0.0	0.0	0.0	0.0	0.0	0.0	-	0.0	-
DOS bonds	0.0	0.0	0.0	0.0	0.0	0.0	0.0	-	0.0	-
TOZ bonds	0.0	0.0	0.0	0.0	0.0	0.0	0.0	-	0.0	-
COI bonds	0.0	0.0	0.0	0.0	0.0	0.0	0.0	-	0.0	-
EDO bonds	0.0	0.0	0.0	0.0	0.0	0.0	0.0	-	0.0	-
2. Other ST debt	0.0	0.0	0.0	0.0	0.0	0.0	0.0	-	0.0	-
deposits of public finance sector entities	0.0	0.0	0.0	0.0	0.0	0.0	0.0	-	0.0	-
matured payables	0.0	0.0	0.0	0.0	0.0	0.0	0.0	-	0.0	-
other	0.0	0.0	0.0	0.0	0.0	0.0	0.0	-	0.0	-
3. TS issued in foreign markets	7,037.8	0.9	8,953.3	1.1	8,160.6	1.0	-792.6	-8.9	1,122.9	16.0
Domestic non-banking sector	262,914.4	33.1	264,333.7	32.2	267,748.9	31.9	3,415.2	1.3	4,834.5	1.8
1. TS issued in domestic market	251,472.4	31.7	251,323.2	30.6	254,805.2	30.4	3,482.0	1.4	3,332.8	1.3
1.1. Marketable TS	244,122.0	30.8	243,973.1	29.7	247,495.1	29.5	3,522.0	1.4	3,373.1	1.4
Treasury bills	1,750.9	0.2	3,878.2	0.5	1,710.8	0.2	-2,167.4	-55.9	-40.1	-2.3
OK bonds	15,930.9	2.0	12,195.9	1.5	12,337.9	1.5	142.0	1.2	-3,593.0	-22.6
PS bonds	70,630.9	8.9	75,271.2	9.2	76,009.0	9.1	737.8	1.0	5,378.1	7.6
DS bonds	71,812.2	9.0	62,570.7	7.6	65,020.9	7.8	2,450.1	3.9	-6,791.3	-9.5
WS bonds	16,278.6	2.1	18,708.6	2.3	19,503.3	2.3	794.7	4.2	3,224.7	19.8
IZ bonds	12,960.5	1.6	12,181.4	1.5	11,933.5	1.4	-247.9	-2.0	-1,027.0	-7.9
TZ bonds	492.2	0.1	466.2	0.1	443.5	0.1	-22.7	-4.9	-48.7	-9.9
WZ bonds	53,530.8	6.7	57,965.8	7.1	59,801.2	7.1	1,835.4	3.2	6,270.5	11.7
PP bonds	735.0	0.1	735.0	0.1	735.0	0.1	0.0	0.0	0.0	0.0
1.2. Savings bonds	7,350.4	0.9	7,350.1	0.9	7,310.1	0.9	-40.0	-0.5	-40.3	-0.5
DOS bonds	1,782.4	0.2	1,571.7	0.2	1,530.3	0.2	-41.4	-2.6	-252.1	-14.1
TOZ bonds	80.3	0.0	105.3	0.0	119.1	0.0	13.8	13.1	38.7	48.2
COI bonds	1,820.8	0.2	1,884.4	0.2	1,867.5	0.2	-16.9	-0.9	46.7	2.6
EDO bonds	3,666.9	0.5	3,788.7	0.5	3,793.2	0.5	4.5	0.1	126.3	3.4
2. Other ST debt	9,492.4	1.2	11,004.7	1.3	11,055.5	1.3	50.8	0.5	1,563.1	16.5
deposits of public finance sector entities	9,438.1	1.2	10,954.7	1.3	11,005.5	1.3	50.8	0.5	1,567.4	16.6
matured payables	50.8	0.0	45.0	0.0	45.0	0.0	0.0	0.0	-5.8	-11.4
other	3.6	0.0	5.0	0.0	5.0	0.0	0.0	0.0	1.5	41.0
3. TS issued in foreign markets	1,949.5	0.2	2,005.8	0.2	1,888.2	0.2	-117.6	-5.9	-61.3	-3.1
II. State Treasury debt towards non-residents	432,375.3	54.5	444,433.5	54.1	453,372.3	54.1	8,938.8	2.0	20,997.0	4.9
1. TS issued in domestic market	190,478.7	24.0	207,315.3	25.2	207,207.2	24.7	-108.1	-0.1	16,728.5	8.8
1.1. Marketable TS	190,461.2	24.0	207,300.5	25.2	207,192.1	24.7	-108.3	-0.1	16,731.0	8.8
Treasury bills	589.7	0.1	248.8	0.0	161.6	0.0	-87.2	-35.0	-428.1	-72.6
OK bonds	32,442.9	4.1	33,977.8	4.1	32,761.4	3.9	-1,216.5	-3.6	318.5	1.0
PS bonds	56,247.8	7.1	51,853.6	6.3	54,233.3	6.5	2,379.7	4.6	-2,014.5	-3.6
DS bonds	62,979.1	7.9	82,487.4	10.0	81,180.0	9.7	-1,307.4	-1.6	18,200.9	28.9
WS bonds	18,831.2	2.4	17,473.9	2.1	17,167.5	2.0	-306.4	-1.8	-1,663.7	-8.8
IZ bonds	9,558.4	1.2	10,384.4	1.3	10,635.4	1.3	251.0	2.4	1,077.0	11.3
TZ bonds	1.9	0.0	1.2	0.0	0.4	0.0	-0.8	-68.5	-1.5	-80.1
WZ bonds	9,810.1	1.2	10,873.4	1.3	11,052.6	1.3	179.1	1.6	1,242.4	12.7
PP bonds	0.0	0.0	0.0	0.0	0.0	0.0	0.0	-	0.0	-
1.2. Savings bonds	17.5	0.0	14.8	0.0	15.1	0.0	0.3	2.0	-2.5	-14.1
DOS bonds	1.5	0.0	1.5	0.0	1.4	0.0	-0.1	-4.0	-0.1	-5.6
TOZ bonds	0.2	0.0	0.2	0.0	0.2	0.0	0.0	0.0	0.0	0.0
COI bonds	11.1	0.0	8.4	0.0	8.5	0.0	0.1	1.8	-2.6	-23.5
EDO bonds	4.7	0.0	4.7	0.0	4.9	0.0	0.2	4.4	0.2	5.1
2. TS issued in foreign markets	190,967.9	24.1	184,121.7	22.4	191,548.3	22.9	7,426.6	4.0	580.5	0.3
3. Foreign loans	50,928.6	6.4	52,996.5	6.5	54,616.7	6.5	1,620.2	3.1	3,688.1	7.2
European Investment Bank	29,130.2	3.7	31,004.2	3.8	32,025.6	3.8	1,021.5	3.3	2,895.5	9.9
The World Bank	20,855.6	2.6	21,125.9	2.6	21,753.7	2.6	627.8	3.0	898.1	4.3
Council of Europe Development Bank	702.4	0.1	707.9	0.1	677.2	0.1	-30.7	-4.3	-25.2	-3.6
Paris Club	136.4	0.0	83.5	0.0	84.3	0.0	0.9	1.0	-52.1	-38.2
other loans	104.1	0.0	75.1	0.0	75.9	0.0	0.8	1.0	-28.2	-27.1
4. Other ST debt	0.1	0.0	0.0	0.0	0.0	0.0	0.0	0.0	-0.1	-96.5

Table 6. Residual maturity of State Treasury debt (PLN million)

	Dec 2012	structure Dec 2012 %	Apr 2013	structure Apr 2013 %	May 2013	structure May 2013 %	change		change	
							May 2013 - Apr 2013		May 2013 - Dec 2012	
							PLN m	%	PLN m	%
State Treasury debt	793,853.7	100.0	821,482.9	100.0	838,052.7	100.0	16,569.9	2.0	44,199.0	5.6
up to 1 year (inc.)	99,702.7	12.6	125,284.2	15.3	122,219.0	14.6	-3,065.2	-2.4	22,516.2	22.6
1 to 3 years (inc.)	178,098.0	22.4	164,103.7	20.0	165,477.6	19.7	1,373.9	0.8	-12,620.4	-7.1
3 to 5 years (inc.)	163,590.1	20.6	188,352.8	22.9	190,570.6	22.7	2,217.9	1.2	26,980.6	16.5
5 to 10 years (inc.)	261,638.9	33.0	249,200.9	30.3	258,438.0	30.8	9,237.2	3.7	-3,200.8	-1.2
over 10 years	90,824.0	11.4	94,541.4	11.5	101,347.5	12.1	6,806.2	7.2	10,523.5	11.6
I. Domestic debt	542,969.9	68.4	573,405.5	69.8	581,838.9	69.4	8,433.3	1.5	38,868.9	7.2
up to 1 year (inc.)	85,243.3	10.7	109,477.5	13.3	105,878.2	12.6	-3,599.3	-3.3	20,635.0	24.2
1 to 3 years (inc.)	142,502.2	18.0	126,044.8	15.3	126,053.9	15.0	9.1	0.0	-16,448.4	-11.5
3 to 5 years (inc.)	130,944.7	16.5	170,989.5	20.8	171,012.8	20.4	23.3	0.0	40,068.1	30.6
5 to 10 years (inc.)	159,531.5	20.1	127,989.5	15.6	134,469.3	16.0	6,479.8	5.1	-25,062.2	-15.7
over 10 years	24,748.2	3.1	38,904.3	4.7	44,424.7	5.3	5,520.4	14.2	19,676.5	79.5
1.1. Marketable TS issued in domestic market	526,109.5	66.3	555,035.9	67.6	563,458.2	67.2	8,422.2	1.5	37,348.6	7.1
fixed rate	404,025.7	50.9	423,804.1	51.6	429,955.1	51.3	6,150.9	1.5	25,929.4	6.4
up to 1 year (inc.)	73,394.9	9.2	96,180.3	11.7	92,577.8	11.0	-3,602.5	-3.7	19,182.8	26.1
1 to 3 years (inc.)	118,123.9	14.9	101,770.8	12.4	101,770.8	12.1	0.0	0.0	-16,353.1	-13.8
3 to 5 years (inc.)	93,751.2	11.8	102,428.1	12.5	102,428.1	12.2	0.0	0.0	8,676.9	9.3
5 to 10 years (inc.)	101,701.4	12.8	97,175.1	11.8	103,673.1	12.4	6,498.0	6.7	1,971.7	1.9
over 10 years	17,054.2	2.1	26,249.8	3.2	29,505.3	3.5	3,255.4	12.4	12,451.0	73.0
fixed rate – inflation-linked	23,100.0	2.9	23,172.4	2.8	23,217.3	2.8	44.9	0.2	117.3	0.5
3 to 5 years (inc.)	15,406.0	1.9	15,454.3	1.9	15,484.3	1.8	30.0	0.2	78.2	0.5
over 10 years	7,694.0	1.0	7,718.1	0.9	7,733.1	0.9	14.9	0.2	39.0	0.5
floating rate	98,983.8	12.5	108,059.4	13.2	110,285.8	13.2	2,226.4	2.1	11,302.0	11.4
up to 1 year (inc.)	884.1	0.1	915.5	0.1	949.5	0.1	33.9	3.7	65.3	7.4
1 to 3 years (inc.)	22,782.8	2.9	22,724.7	2.8	22,667.2	2.7	-57.5	-0.3	-115.6	-0.5
3 to 5 years (inc.)	20,777.2	2.6	51,914.6	6.3	51,914.6	6.2	0.0	0.0	31,137.5	149.9
5 to 10 years (inc.)	54,539.7	6.9	27,568.1	3.4	27,568.1	3.3	0.0	0.0	-26,971.6	-49.5
over 10 years	-	-	4,936.4	0.6	7,186.4	0.9	2,250.0	45.6	7,186.4	-
1.2. Savings bonds	7,367.9	0.9	7,364.9	0.9	7,325.2	0.9	-39.7	-0.5	-42.8	-0.6
fixed rate	1,784.0	0.2	1,573.2	0.2	1,531.8	0.2	-41.5	-2.6	-252.2	-14.1
up to 1 year (inc.)	1,028.4	0.1	953.9	0.1	902.3	0.1	-51.6	-5.4	-126.1	-12.3
1 to 3 years (inc.)	755.6	0.1	619.4	0.1	629.5	0.1	10.1	1.6	-126.1	-16.7
floating rate	5,584.0	0.7	5,791.7	0.7	5,793.4	0.7	1.8	0.0	209.4	3.8
up to 1 year (inc.)	443.4	0.1	423.1	0.1	393.2	0.0	-29.9	-7.1	-50.2	-11.3
1 to 3 years (inc.)	839.9	0.1	929.9	0.1	986.4	0.1	56.5	6.1	146.4	17.4
3 to 5 years (inc.)	1,010.3	0.1	1,192.4	0.1	1,185.8	0.1	-6.7	-0.6	175.5	17.4
5 to 10 years (inc.)	3,290.4	0.4	3,246.3	0.4	3,228.1	0.4	-18.2	-0.6	-62.3	-1.9
2. Other ST debt	9,492.4	1.2	11,004.7	1.3	11,055.5	1.3	50.8	0.5	1,563.1	16.5
up to 1 year (inc.)	9,492.4	1.2	11,004.7	1.3	11,055.5	1.3	50.8	0.5	1,563.1	16.5
II. Foreign debt	250,883.8	31.6	248,077.3	30.2	256,213.9	30.6	8,136.5	3.3	5,330.1	2.1
up to 1 year (inc.)	14,459.5	1.8	15,806.7	1.9	16,340.7	1.9	534.0	3.4	1,881.3	13.0
1 to 3 years (inc.)	35,595.8	4.5	38,058.9	4.6	39,423.7	4.7	1,364.8	3.6	3,827.9	10.8
3 to 5 years (inc.)	32,645.4	4.1	17,363.3	2.1	19,557.9	2.3	2,194.6	12.6	-13,087.5	-40.1
5 to 10 years (inc.)	102,107.4	12.9	121,211.4	14.8	123,968.8	14.8	2,757.4	2.3	21,861.4	21.4
over 10 years	66,075.8	8.3	55,637.0	6.8	56,922.8	6.8	1,285.8	2.3	-9,153.0	-13.9
1. TS issued in foreign markets	199,955.1	25.2	195,080.8	23.7	201,597.2	24.1	6,516.3	3.3	1,642.1	0.8
fixed rate	198,431.5	25.0	193,553.0	23.6	200,031.2	23.9	6,478.2	3.3	1,599.8	0.8
up to 1 year (inc.)	11,363.2	1.4	12,536.0	1.5	12,963.7	1.5	427.7	3.4	1,600.6	14.1
1 to 3 years (inc.)	29,414.2	3.7	30,662.8	3.7	31,622.7	3.8	959.9	3.1	2,208.5	7.5
3 to 5 years (inc.)	26,599.6	3.4	12,891.6	1.6	14,808.3	1.8	1,916.6	14.9	-11,791.3	-44.3
5 to 10 years (inc.)	81,204.4	10.2	98,983.4	12.0	100,949.5	12.0	1,966.2	2.0	19,745.1	24.3
over 10 years	49,850.1	6.3	38,479.2	4.7	39,687.0	4.7	1,207.8	3.1	-10,163.1	-20.4
floating rate	1,523.6	0.2	1,527.8	0.2	1,565.9	0.2	38.1	2.5	42.3	2.8
1 to 3 years (inc.)	1,523.6	0.2	1,527.8	0.2	1,565.9	0.2	38.1	2.5	42.3	2.8
2. Foreign loans	50,928.6	6.4	52,996.5	6.5	54,616.7	6.5	1,620.2	3.1	3,688.1	7.2
fixed rate	21,496.0	2.7	20,278.8	2.5	20,861.2	2.5	582.4	2.9	-634.8	-3.0
up to 1 year (inc.)	2,798.4	0.4	1,812.5	0.2	1,874.6	0.2	62.1	3.4	-923.8	-33.0
1 to 3 years (inc.)	2,648.6	0.3	4,577.9	0.6	4,958.9	0.6	381.1	8.3	2,310.4	87.2
3 to 5 years (inc.)	4,993.9	0.6	2,940.3	0.4	2,998.7	0.4	58.4	2.0	-1,995.3	-40.0
5 to 10 years (inc.)	7,520.0	0.9	7,496.3	0.9	7,675.0	0.9	178.6	2.4	154.9	2.1
over 10 years	3,535.1	0.4	3,451.8	0.4	3,354.1	0.4	-97.7	-2.8	-181.0	-5.1
floating rate	29,432.6	3.7	32,717.7	4.0	33,755.5	4.0	1,037.8	3.2	4,322.9	14.7
up to 1 year (inc.)	297.9	0.0	1,458.3	0.2	1,502.4	0.2	44.2	3.0	1,204.6	404.4
1 to 3 years (inc.)	2,009.3	0.3	1,290.4	0.2	1,276.1	0.2	-14.3	-1.1	-733.2	-36.5
3 to 5 years (inc.)	1,051.9	0.1	1,531.3	0.2	1,750.9	0.2	219.6	14.3	699.1	66.5
5 to 10 years (inc.)	13,382.9	1.7	14,731.7	1.8	15,344.3	1.8	612.6	4.2	1,961.4	14.7
over 10 years	12,690.6	1.6	13,706.0	1.7	13,881.7	1.7	175.7	1.3	1,191.1	9.4
3. Other ST debt	0.1	0.0	0.0	0.0	0.0	0.0	0.0	0.0	-0.1	-96.5
up to 1 year (inc.)	0.1	0.0	0.0	0.0	0.0	0.0	0.0	0.0	-0.1	-96.5

Table 7. State Treasury debt by instrument according to the place of issue criterion in EUR million

	Dec 2012	Apr 2013	May 2013	change		change	
				May 2013 - Apr 2013		May 2013 - Dec 2012	
				EUR m	%	EUR m	%
State Treasury debt	194,181.7	198,286.9	195,341.2	-2,945.7	-1.5	1,159.5	0.6
I. Domestic debt	132,813.9	138,406.8	135,620.5	-2,786.4	-2.0	2,806.5	2.1
1. Treasury Securities issued in domestic market	130,492.0	135,750.5	133,043.5	-2,707.0	-2.0	2,551.5	2.0
1.1. Marketable TS	128,689.8	133,972.8	131,336.1	-2,636.7	-2.0	2,646.3	2.1
- Treasury bills	1,494.6	2,035.5	1,125.9	-909.6	-44.7	-368.7	-24.7
- bonds issued in domestic market	127,195.1	131,937.3	130,210.2	-1,727.1	-1.3	3,015.1	2.4
1.2. Savings bonds	1,802.2	1,777.7	1,707.4	-70.3	-4.0	-94.8	-5.3
2. Other ST debt	2,321.9	2,656.3	2,576.9	-79.4	-3.0	255.0	11.0
II. Foreign debt	61,367.8	59,880.1	59,720.7	-159.4	-0.3	-1,647.0	-2.7
1. Treasury Securities issued in foreign markets	48,910.3	47,088.0	46,990.2	-97.8	-0.2	-1,920.2	-3.9
2. Loans	12,457.5	12,792.1	12,730.6	-61.5	-0.5	273.1	2.2
1.1. Paris Club	33.4	20.1	19.7	-0.5	-2.4	-13.7	-41.1
1.2. International financial institutions	12,398.6	12,753.9	12,693.2	-60.6	-0.5	294.6	2.4
- World Bank	5,101.4	5,099.3	5,070.6	-28.7	-0.6	-30.9	-0.6
- European Investment Bank	7,125.4	7,483.7	7,464.8	-18.9	-0.3	339.4	4.8
- Council of Europe Development Bank	171.8	170.9	157.9	-13.0	-7.6	-14.0	-8.1
1.3. other loans	25.5	18.1	17.7	-0.4	-2.4	-7.8	-30.5
3. Other ST debt	0.0	0.0	0.0	0.0	-3.4	0.0	-96.7
<i>FX rate (PLN/EUR)</i>	<i>4.0882</i>	<i>4.1429</i>	<i>4.2902</i>	<i>0.1473</i>	<i>3.6</i>	<i>0.2020</i>	<i>4.9</i>

Table 8. State Treasury debt by instrument according to the place of issue criterion in USD million

	Dec 2012	Apr 2013	May 2013	change		change	
				May 2013 - Apr 2013		May 2013 - Dec 2012	
				USD m	%	USD m	%
State Treasury debt	256,114.9	258,971.3	254,317.6	-4,653.7	-1.8	-1,797.3	-0.7
I. Domestic debt	175,174.2	180,765.3	176,566.3	-4,199.0	-2.3	1,392.1	0.8
1. Treasury Securities issued in domestic market	172,111.7	177,296.1	173,211.3	-4,084.7	-2.3	1,099.6	0.6
1.1. Marketable TS	169,734.7	174,974.3	170,988.4	-3,985.9	-2.3	1,253.8	0.7
- Treasury bills	1,971.3	2,658.5	1,465.8	-1,192.6	-44.9	-505.5	-25.6
- bonds issued in domestic market	167,763.3	172,315.8	169,522.6	-2,793.2	-1.6	1,759.3	1.0
1.2. Savings bonds	2,377.1	2,321.8	2,222.9	-98.9	-4.3	-154.1	-6.5
2. Other ST debt	3,062.5	3,469.2	3,354.9	-114.3	-3.3	292.5	9.5
II. Foreign debt	80,940.7	78,206.0	77,751.3	-454.7	-0.6	-3,189.4	-3.9
1. Treasury Securities issued in foreign markets	64,510.0	61,499.0	61,177.2	-321.8	-0.5	-3,332.8	-5.2
2. Loans	16,430.7	16,707.1	16,574.1	-132.9	-0.8	143.4	0.9
1.1. Paris Club	44.0	26.3	25.6	-0.7	-2.7	-18.4	-41.9
1.2. International financial institutions	16,353.1	16,657.1	16,525.5	-131.6	-0.8	172.4	1.1
- World Bank	6,728.5	6,659.9	6,601.4	-58.5	-0.9	-127.0	-1.9
- European Investment Bank	9,398.0	9,774.0	9,718.6	-55.4	-0.6	320.5	3.4
- Council of Europe Development Bank	226.6	223.2	205.5	-17.6	-7.9	-21.1	-9.3
1.3. other loans	33.6	23.7	23.0	-0.7	-2.7	-10.5	-31.4
3. Other ST debt	0.0	0.0	0.0	0.0	-3.7	0.0	-96.7
<i>FX rate (PLN/USD)</i>	<i>3.0996</i>	<i>3.1721</i>	<i>3.2953</i>	<i>0.1232</i>	<i>3.9</i>	<i>0.1957</i>	<i>6.3</i>